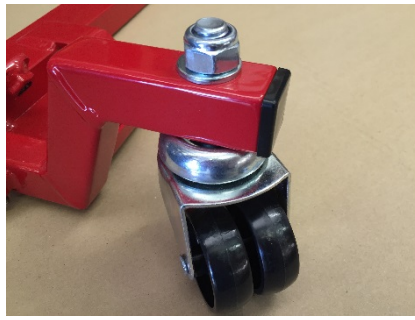


## Abba Moto Glide Assembly & Operating Instructions.

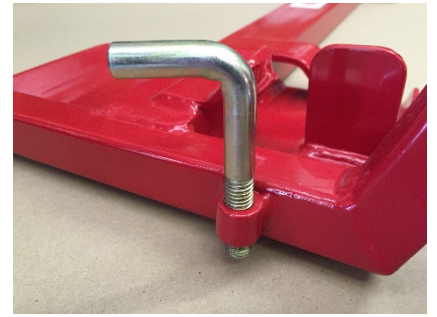
**Note:** If you have purchased the Moto glide together with the abba Superbike Stand we strongly recommend you use the Superbike stand (and Front Lift arm if purchased) a few times on their own to fully understand the product before using the Moto Glide.



Ensure you have located all the assembly parts required to fully assemble and use the Moto Glide.



Fit all four castors to the Moto Glide, ensuring the bolt is inserted from the underside of the castor. Use 1x washer and 1x nyloc nut per wheel. Tighten securely with a spanner and the hex key provided. Note: Ensure all castors spin freely, if you find a castor not spinning freely, simply loosen the bolt slightly.



Screw the locking brake into position on the side of the Moto glide.



Once your Superbike stand is fitted in the normal way, slide the Moto Glide in between the front wheel and stand.



On certain motorcycles sliding the Moto Glide in between the stand and front wheel won't be possible. In this instance, slide the Moto Glide in behind the stand as shown above.



Stand the bike up vertical and raise the abba stand off the ground by pushing down on the handle when extended. Wheel the bike either forward or backwards (depending on locating position as mentioned previously). Locate the stand in the moto Glide with the side of the abba stand against the vertical stop on the Glide. Look over to the other side of the bike to ensure both sides are seated on the rear of the Moto Glide base.



Before lifting, put your left foot in front of the Moto Glide to keep the Moto Glide in position. Operate the Superbike stand in the normal way pulling the lever forward. NOTE: You will be lifting the stand slightly higher than normal, so this will require a little extra effort to operate than when using the Superbike stand on its own.



Once you have raised the superbike stand into position the stand will come to rest fully on the Moto Glide base as shown above.



Locate the locking screw bracket over the front foot of the superbike stand and tighten down firmly to hold the stand in position.



Your abba Moto Glide is now ready for use. With the Moto Glide in place, this will enable you to swing the back of the bike around in any direction. The bike will pivot on the front wheel which is perfect for manoeuvring the bike into a tight spot.

It is also possible to push/lean your body weight on the rear of the motorcycle to raise the front wheel and pivot the bike around fully on the spot. (Note: Operating in this manner depends on the bike and individual)

To Remove the Moto Glide: Repeat the above steps in the reverse order.

If in doubt ask us! Email: [info@abbastands.co.uk](mailto:info@abbastands.co.uk) Tel: 01245 322331